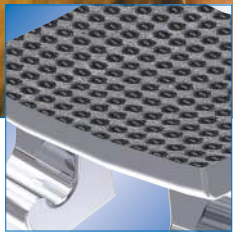




equilibrium® 2
equilibrium® ti
Ortho-Cast™



equilibrium® 2

Harmony in Function and Comfort

Excellent Function



Optimized base

Perfect fit – easy handling

For an even better fit, the contour of the bracket base has been optimized for cuspids, first bicuspid and second bicuspid. Furthermore, the mesial-distal side of the bracket base has been redesigned to make it easier to grasp and place the bracket.

Rhomboid base

Accurate positioning

The mid marking and rhomboid base of **equilibrium® 2** brackets greatly facilitate the positioning on the center of the clinical crown.

Highest precision

Optimal treatment

The rigidity of the graceful **equilibrium® 2** brackets guarantees the dimensional stability of the precision slot. Exact torque and angulation values ensure correct transmission of the required arch wire forces.

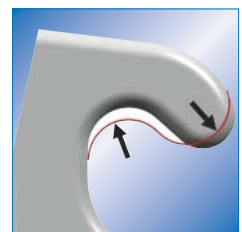
equilibrium® 2



Gingival Offset

Best comfort and highest acceptance

The gingival offset of equilibrium® 2 brackets ensures that there is no occlusal interference in the premolar area. The gingival offset of the bracket wings also prevent gum irritation. The low profile of the brackets ensures that they are comfortable for the patient to wear.



Special geometric bracket wings

Comfortable and reliable ligating

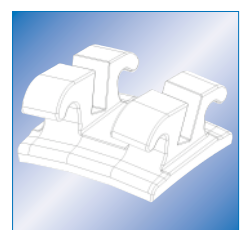
The ideal shape of equilibrium® 2 bracket wings and their extremely practical deep tie wing undercuts, make even multiple ligation very easy.



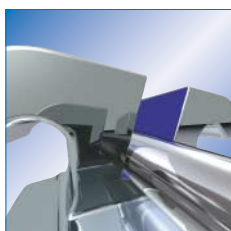
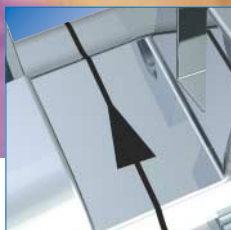
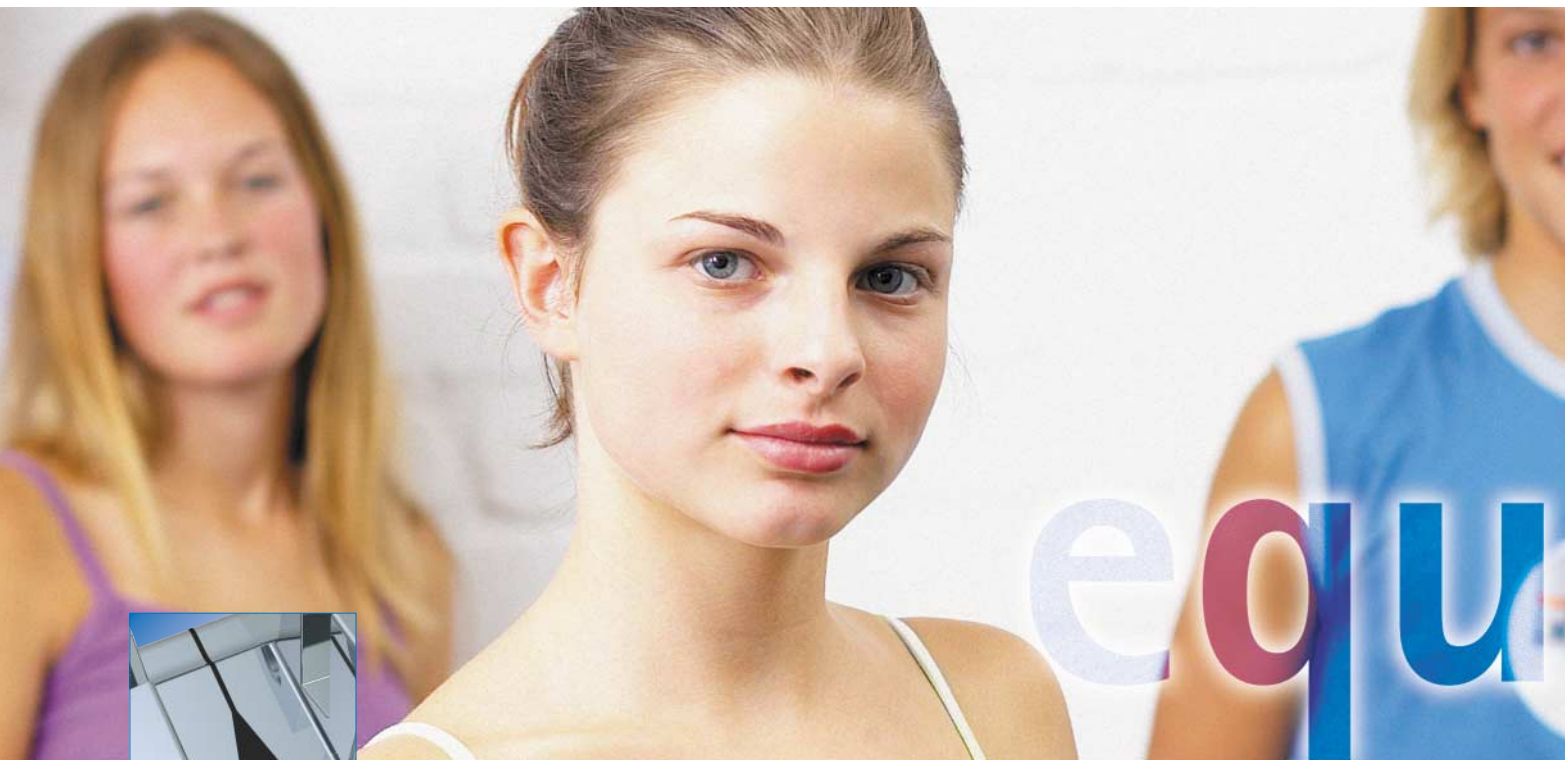
Lower In/Out values

Excellent transfer of force

Due to the integrated laser-structured base, the low In/Out values enable the force to be applied even closer to the axis of the crown. Therefore, the fundamental principles of orthodontic treatments are optimally realized.



Innovative Construction



Improved, patented laser structured base

Optimized bonding properties - easy debonding

The even retention of the optimized laser structured bracket base produces an optimum bonding strength, and also reduces premature debonding. The surface for adhesive application has been optimized.

The ideal combination of macro and micro retention improves the adhesive/bracket bond, achieving the individualized setting of the bonding properties, the ideal combination of therapeutically needed bonding strength and optimal debonding.

Patents: US No. 5,944,517
EP No. 0841877

An original laser base one-piece construction

Excellent biocompatibility

The patented laser retention makes it possible to work with only one material, eliminating the need for other alloys and solder, therefore, improving the biocompatibility.



Compact design

Optimized retention - very appealing

The retention is in the bracket base not in a mesh base that has been soldered on. Therefore, the brackets have a lower profile, they are comfortable to wear and aesthetically appealing. Furthermore, the In/Out is smaller and the transfer of force is optimized.

Patented laser marking

Easy identification

Quick and reliable identification of the distinct symbols on all **equilibrium® 2** brackets due to the patented laser marking. Compared to conventional markings, laser marking cannot be abraded and does not contain harmful coloring agents.

equilibrium® 2 in pure titanium: equilibrium



Pure titanium: extremely corrosion resistant

Excellent biocompatibility

Titanium, among all metals that are being used for dental applications, has the optimum biocompatibility.

Pure titanium: super strong

Extraordinary properties

Mechanically, titanium is extremely strong and neutral in taste, therefore, perfectly suited for the use in orthodontics.

equilibrium[®] ti

Pure titanium: low friction

Effective treatment

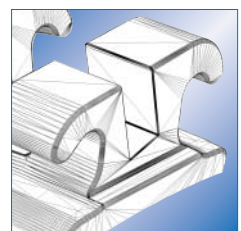
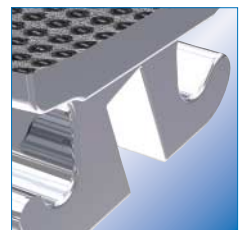
Due to a special surface treatment, the slot of **equilibrium[®] ti** brackets provide excellent friction values¹⁾²⁾. The friction values can be compared with stainless steel brackets. By using nickel-titanium arch wire, the friction values are even better.

¹⁾R.P. Kusy and J.Q. Withley: Friction between different wire-bracket configurations and materials. Semin. Orthod. 1997; 3: 166-177

²⁾R.P. Kusy and P.W. O'Grady: Evaluation of titanium brackets for orthodontic treatment. Am. J. Orthod. Dentofacial Orthop 2000; 118: 675-684 und 1998; 114: 558-572

**Profit from the know how of the market leader.
Perfect brackets made of pure titanium.**

Unbeatable price - performance ratio



Ortho-Cast™ buccal tubes



One-piece MIM construction

Perfect mechanical properties – excellent biocompatibility

The MIM construction (Metal Injection Molding), in combination with a highly corrosion resistant special steel increases the stability, the mechanical precision of Ortho-Cast™ buccal tubes, as well as the biocompatibility, because solder connections have been eliminated.

Dynamic wedge shape and anatomical base structure

Optimal fit – minimal cheek irritation

The Ortho-Cast™ buccal tubes were designed with the aid of modern CAD technology. The three dimensional base structure (mesial-distal and occlusal-gingival) guarantees an optimal fit.

The wedge shape slims down towards distal and reduces possible cheek irritation.



Innovative design

Easy handling

Inserting wires and arches is simple due to the funneled entryway. The slightly larger base makes it easier to grasp the buccal tube with clamping tweezers, and allows for quick removal of excess adhesive. Optimally formed hooks and distal notches make it easier to place one or multiple elastics.

Patented laser base

Excellent bonding properties

The patented laser structured base of Ortho-Cast™ buccal tubes ensures a secure bond throughout the treatment period, and also allows easy debonding.

Patents: US No. 5,944,517
 EP No. 0841877

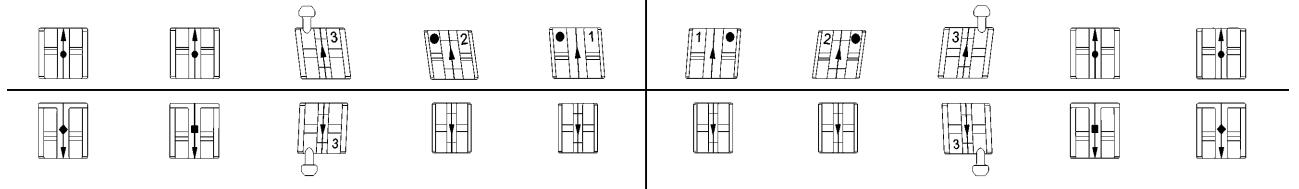
Roth 18 / Assortments

equilibrium® 2 Bracket System Roth 18

Slot: 0.46 x 0.76 mm / 18 x 30 · cuspid brackets with button hooks - Note: cuspid brackets without hooks (see single packs page 13)

Torque	- 7°	- 7°	- 2°	+ 8°	+ 12°	+ 12°	+ 8°	- 2°	- 7°	- 7°
Angulation	0°	0°	+ 13°	+ 9°	+ 5°	+ 5°	+ 9°	+ 13°	0°	0°
In/Out	0.7 mm	0.7 mm	0.7 mm	1.3 mm	0.7 mm	0.7 mm	1.3 mm	0.7 mm	0.7 mm	0.7 mm
Width	2.9 mm	2.9 mm	2.9 mm	3.0 mm	3.4 mm	3.4 mm	3.0 mm	2.9 mm	2.9 mm	2.9 mm
Order-No.	790-206-01	790-206-01	790-204-01	790-202-01	790-200-01	790-201-01	790-203-01	790-205-01	790-206-01	790-206-01
Quantity	10 pieces	10 pieces	10 pieces	10 pieces	10 pieces	10 pieces	10 pieces	10 pieces	10 pieces	10 pieces

CE 0483



Torque	- 22°	- 17°	- 11°	- 1°	- 1°	- 1°	- 1°	- 11°	- 17°	- 22°
Angulation	0°	0°	+ 7°	0°	0°	0°	0°	+ 7°	0°	0°
In/Out	0.7 mm	0.7 mm	0.7 mm	1.3 mm	1.3 mm	1.3 mm	1.3 mm	0.7 mm	0.7 mm	0.7 mm
Width	2.9 mm	2.9 mm	2.8 mm	2.4 mm	2.4 mm	2.4 mm	2.4 mm	2.8 mm	2.9 mm	2.9 mm
Order-No.	790-211-01	790-210-01	790-208-01	790-207-01	790-207-01	790-207-01	790-207-01	790-209-01	790-210-01	790-211-01
Quantity	10 pieces	10 pieces	10 pieces	10 pieces	10 pieces	10 pieces	10 pieces	10 pieces	10 pieces	10 pieces

Assortments:

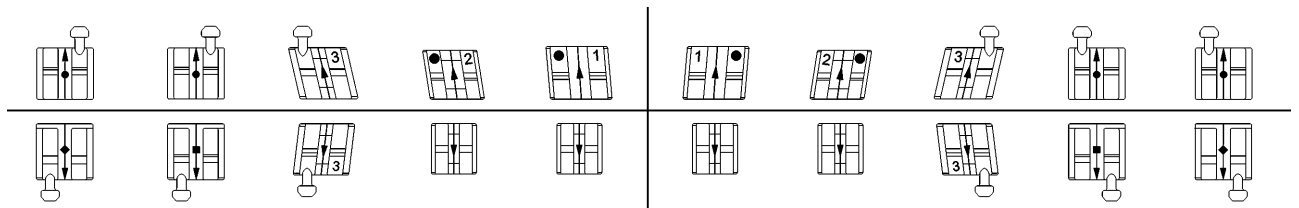
1 case	20 brackets	891-251-01	
10 cases	200 brackets	891-252-01	
50 cases	1.000 brackets	891-253-01	

equilibrium® 2 Bracket System Roth 18

Slot: 0.46 x 0.76 mm / 18 x 30 · button hooks on cuspid, first bicuspid and second bicuspid brackets

Torque	- 7°	- 7°	- 2°	+ 8°	+ 12°	+ 12°	+ 8°	- 2°	- 7°	- 7°
Angulation	0°	0°	+ 13°	+ 9°	+ 5°	+ 5°	+ 9°	+ 13°	0°	0°
In/Out	0.7 mm	0.7 mm	0.7 mm	1.3 mm	0.7 mm	0.7 mm	1.3 mm	0.7 mm	0.7 mm	0.7 mm
Width	2.9 mm	2.9 mm	2.9 mm	3.0 mm	3.4 mm	3.4 mm	3.0 mm	2.9 mm	2.9 mm	2.9 mm
Order-No.	790-249-01	790-249-01	790-204-01	790-202-01	790-200-01	790-201-01	790-203-01	790-205-01	790-250-01	790-250-01
Quantity	10 pieces	10 pieces	10 pieces	10 pieces	10 pieces	10 pieces	10 pieces	10 pieces	10 pieces	10 pieces

CE 0483



Torque	- 22°	- 17°	- 11°	- 1°	- 1°	- 1°	- 1°	- 11°	- 17°	- 22°
Angulation	0°	0°	+ 7°	0°	0°	0°	0°	+ 7°	0°	0°
In/Out	0.7 mm	0.7 mm	0.7 mm	1.3 mm	1.3 mm	1.3 mm	1.3 mm	0.7 mm	0.7 mm	0.7 mm
Width	2.9 mm	2.9 mm	2.8 mm	2.4 mm	2.4 mm	2.4 mm	2.4 mm	2.8 mm	2.9 mm	2.9 mm
Order-No.	790-253-01	790-251-01	790-208-01	790-207-01	790-207-01	790-207-01	790-207-01	790-209-01	790-252-01	790-254-01
Quantity	10 pieces	10 pieces	10 pieces	10 pieces	10 pieces	10 pieces	10 pieces	10 pieces	10 pieces	10 pieces

Assortments:

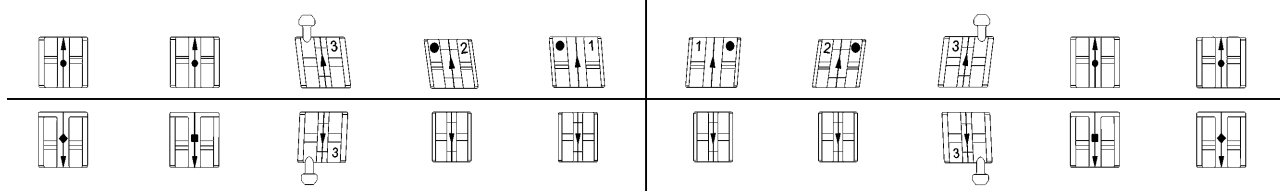
1 case	20 brackets	891-307-01	
10 cases	200 brackets	891-308-01	
50 cases	1.000 brackets	891-309-01	

equilibrium® 2 Bracket System Roth 22

Slot: 0.56 x 0.76 mm / 22 x 30 · cuspid brackets with button hooks - Note: cuspid brackets without hooks (see single packs page 13)

Torque	- 7°	- 7°	- 2°	+ 8°	+ 12°	+ 12°	+ 8°	- 2°	- 7°	- 7°
Angulation	0°	0°	+ 13°	+ 9°	+ 5°	+ 5°	+ 9°	+ 13°	0°	0°
In/Out	0.7 mm	0.7 mm	0.7 mm	1.3 mm	0.7 mm	0.7 mm	1.3 mm	0.7 mm	0.7 mm	0.7 mm
Width	2.9 mm	2.9 mm	2.9 mm	3.0 mm	3.4 mm	3.4 mm	3.0 mm	2.9 mm	2.9 mm	2.9 mm
Order-No.	790-218-01	790-218-01	790-216-01	790-214-01	790-212-01	790-213-01	790-215-01	790-217-01	790-218-01	790-218-01
Quantity	10 pieces	10 pieces	10 pieces	10 pieces	10 pieces	10 pieces	10 pieces	10 pieces	10 pieces	10 pieces

CE 0483



Torque	- 22°	- 17°	- 11°	- 1°	- 1°	- 1°	- 1°	- 11°	- 17°	- 22°
Angulation	0°	0°	+ 7°	0°	0°	0°	0°	+ 7°	0°	0°
In/Out	0.7 mm	0.7 mm	0.7 mm	1.3 mm	1.3 mm	1.3 mm	1.3 mm	0.7 mm	0.7 mm	0.7 mm
Width	2.9 mm	2.9 mm	2.8 mm	2.4 mm	2.4 mm	2.4 mm	2.4 mm	2.8 mm	2.9 mm	2.9 mm
Order-No.	790-223-01	790-222-01	790-220-01	790-219-01	790-219-01	790-219-01	790-219-01	790-221-01	790-222-01	790-223-01
Quantity	10 pieces	10 pieces	10 pieces	10 pieces	10 pieces	10 pieces	10 pieces	10 pieces	10 pieces	10 pieces

Assortments:

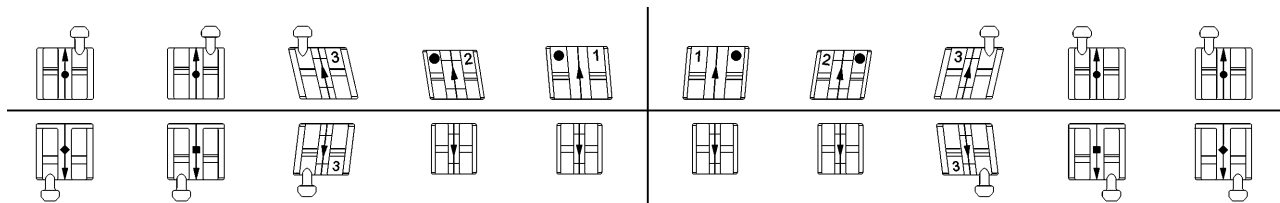
1 case	20 brackets	891-254-01	
10 cases	200 brackets	891-255-01	
50 cases	1.000 brackets	891-256-01	

equilibrium® 2 Bracket System Roth 22

Slot: 0.56 x 0.76 mm / 22 x 30 · button hooks on cuspid, first bicuspid and second bicuspid brackets

Torque	- 7°	- 7°	- 2°	+ 8°	+ 12°	+ 12°	+ 8°	- 2°	- 7°	- 7°
Angulation	0°	0°	+ 13°	+ 9°	+ 5°	+ 5°	+ 9°	+ 13°	0°	0°
In/Out	0.7 mm	0.7 mm	0.7 mm	1.3 mm	0.7 mm	0.7 mm	1.3 mm	0.7 mm	0.7 mm	0.7 mm
Width	2.9 mm	2.9 mm	2.9 mm	3.0 mm	3.4 mm	3.4 mm	3.0 mm	2.9 mm	2.9 mm	2.9 mm
Order-No.	790-243-01	790-243-01	790-216-01	790-214-01	790-212-01	790-213-01	790-215-01	790-217-01	790-244-01	790-244-01
Quantity	10 pieces	10 pieces	10 pieces	10 pieces	10 pieces	10 pieces	10 pieces	10 pieces	10 pieces	10 pieces

CE 0483



Torque	- 22°	- 17°	- 11°	- 1°	- 1°	- 1°	- 1°	- 11°	- 17°	- 22°
Angulation	0°	0°	+ 7°	0°	0°	0°	0°	+ 7°	0°	0°
In/Out	0.7 mm	0.7 mm	0.7 mm	1.3 mm	1.3 mm	1.3 mm	1.3 mm	0.7 mm	0.7 mm	0.7 mm
Width	2.9 mm	2.9 mm	2.8 mm	2.4 mm	2.4 mm	2.4 mm	2.4 mm	2.8 mm	2.9 mm	2.9 mm
Order-No.	790-257-01	790-255-01	790-220-01	790-219-01	790-219-01	790-219-01	790-219-01	790-221-01	790-256-01	790-258-01
Quantity	10 pieces	10 pieces	10 pieces	10 pieces	10 pieces	10 pieces	10 pieces	10 pieces	10 pieces	10 pieces

Assortments:

1 case	20 brackets	891-310-01	
10 cases	200 brackets	891-311-01	
50 cases	1.000 brackets	891-312-01	

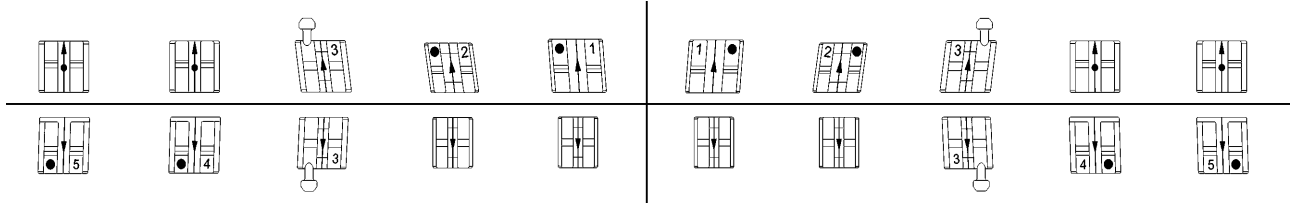
McLaughlin-Bennett-Trevisi 22* / Assortments

equilibrium® 2 McLaughlin-Bennett-Trevisi 22*

Slot: 0.56 x 0.76 mm / 22 x 30 · cuspid brackets with button hooks - Note: cuspid brackets without hooks (see single packs page 13)

Torque	- 7°	- 7°	0°	+ 10°	+ 17°	+ 17°	+ 10°	0°	- 7°	- 7°
Angulation	0°	0°	+ 8°	+ 8°	+ 4°	+ 4°	+ 8°	+ 8°	0°	0°
In/Out	1.2 mm	0.7 mm	0.7 mm	1.3 mm	0.7 mm	0.7 mm	1.3 mm	0.7 mm	0.7 mm	1.2 mm
Width	2.9 mm	2.9 mm	2.9 mm	3.0 mm	3.4 mm	3.4 mm	3.0 mm	2.9 mm	2.9 mm	2.9 mm
Order-No.	790-267-01	790-218-01	790-228-01	790-226-01	790-224-01	790-225-01	790-227-01	790-229-01	790-218-01	790-267-01
Quantity	10 pieces	10 pieces	10 pieces	10 pieces	10 pieces	10 pieces	10 pieces	10 pieces	10 pieces	10 pieces

CE 0483



Torque	- 17°	- 12°	0°	- 6°	- 6°	- 6°	- 6°	0°	- 12°	- 17°
Angulation	+ 2°	+ 2°	+ 3°	0°	0°	0°	0°	+ 3°	+ 2°	+ 2°
In/Out	0.7 mm	0.7 mm	0.7 mm	1.3 mm	1.3 mm	1.3 mm	1.3 mm	0.7 mm	0.7 mm	0.7 mm
Width	2.9 mm	2.9 mm	2.8 mm	2.4 mm	2.4 mm	2.4 mm	2.4 mm	2.8 mm	2.9 mm	2.9 mm
Order-No.	790-241-01	790-239-01	790-234-01	790-233-01	790-233-01	790-233-01	790-233-01	790-235-01	790-240-01	790-242-01
Quantity	10 pieces	10 pieces	10 pieces	10 pieces	10 pieces	10 pieces	10 pieces	10 pieces	10 pieces	10 pieces

Assortments:

1 case	20 brackets	891-326-01	
10 cases	200 brackets	891-327-01	
50 cases	1.000 brackets	891-328-01	

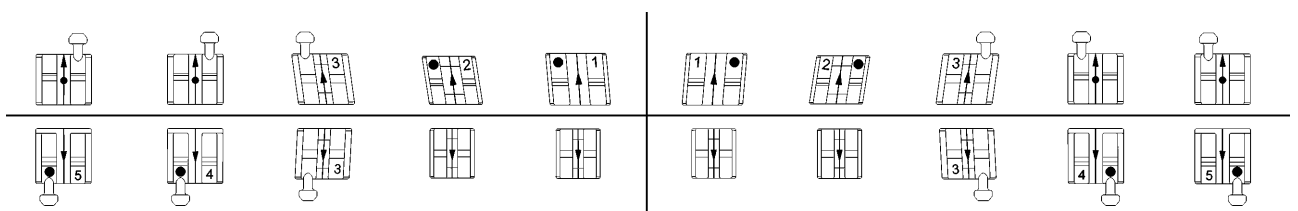
* The Dentaurem version of this prescription is not claimed to be a duplication of any other, nor does Dentaurem imply that it is endorsed in any way by Drs. McLaughlin, Bennett and Trevisi.

equilibrium® 2 McLaughlin-Bennett-Trevisi 22*

Slot: 0.56 x 0.76 mm / 22 x 30 · button hooks on cuspid, first bicuspid and second bicuspid brackets

Torque	- 7°	- 7°	0°	+ 10°	+ 17°	+ 17°	+ 10°	0°	- 7°	- 7°
Angulation	0°	0°	+ 8°	+ 8°	+ 4°	+ 4°	+ 8°	+ 8°	0°	0°
In/Out	1.2 mm	0.7 mm	0.7 mm	1.3 mm	0.7 mm	0.7 mm	1.3 mm	0.7 mm	0.7 mm	1.2 mm
Width	2.9 mm	2.9 mm	2.9 mm	3.0 mm	3.4 mm	3.4 mm	3.0 mm	2.9 mm	2.9 mm	2.9 mm
Order-No.	790-268-01	790-243-01	790-228-01	790-226-01	790-224-01	790-225-01	790-227-01	790-229-01	790-244-01	790-269-01
Quantity	10 pieces	10 pieces	10 pieces	10 pieces	10 pieces	10 pieces	10 pieces	10 pieces	10 pieces	10 pieces

CE 0483



Torque	- 17°	- 12°	0°	- 6°	- 6°	- 6°	- 6°	0°	- 12°	- 17°
Angulation	+ 2°	+ 2°	+ 3°	0°	0°	0°	0°	+ 3°	+ 2°	+ 2°
In/Out	0.7 mm	0.7 mm	0.7 mm	1.3 mm	1.3 mm	1.3 mm	1.3 mm	0.7 mm	0.7 mm	0.7 mm
Width	2.9 mm	2.9 mm	2.8 mm	2.4 mm	2.4 mm	2.4 mm	2.4 mm	2.8 mm	2.9 mm	2.9 mm
Order-No.	790-247-01	790-245-01	790-234-01	790-233-01	790-233-01	790-233-01	790-233-01	790-235-01	790-246-01	790-248-01
Quantity	10 pieces	10 pieces	10 pieces	10 pieces	10 pieces	10 pieces	10 pieces	10 pieces	10 pieces	10 pieces

Assortments:

1 case	20 brackets	891-330-01	
10 cases	200 brackets	891-331-01	
50 cases	1.000 brackets	891-332-01	

* The Dentaurem version of this prescription is not claimed to be a duplication of any other, nor does Dentaurem imply that it is endorsed in any way by Drs. McLaughlin, Bennett and Trevisi.

equilibrium® 2 / Single Packs

Roth 18

Slot: 0.46 x 0.76 mm / 18 x 30

Teeth	Torque	Angulation	In/Out	Hook	Width	Order-No.	Quantity
13	- 2°	+ 13°	0.7 mm		2.9 mm	790-259-01	10 pieces
23	- 2°	+ 13°	0.7 mm		2.9 mm	790-260-01	10 pieces

CE 0483



Teeth	Torque	Angulation	In/Out	Hook	Width	Order-No.	Quantity
43	- 11°	+ 7°	0.7 mm		2.8 mm	790-261-01	10 pieces
33	- 11°	+ 7°	0.7 mm		2.8 mm	790-262-01	10 pieces

CE 0483



Roth 22

Slot: 0.56 x 0.76 mm / 22 x 30

Teeth	Torque	Angulation	In/Out	Hook	Width	Order-No.	Quantity
13	- 2°	+ 13°	0.7 mm		2.9 mm	790-263-01	10 pieces
23	- 2°	+ 13°	0.7 mm		2.9 mm	790-264-01	10 pieces

CE 0483



Teeth	Torque	Angulation	In/Out	Hook	Width	Order-No.	Quantity
43	- 11°	+ 7°	0.7 mm		2.8 mm	790-265-01	10 pieces
33	- 11°	+ 7°	0.7 mm		2.8 mm	790-266-01	10 pieces

CE 0483



equilibrium® 2 McLaughlin-Bennett-Trevisi 22*

Slot: 0.56 x 0.76 mm / 22 x 30

Teeth	Torque	Angulation	In/Out	Hook	Width	Order-No.	Quantity
13	- 7°	+ 8°	0.7 mm		2.9 mm	790-230-01	10 pieces
23	- 7°	+ 8°	0.7 mm		2.9 mm	790-231-01	10 pieces

CE 0483



Teeth	Torque	Angulation	In/Out	Hook	Width	Order-No.	Quantity
43	- 6°	+ 3°	0.7 mm		2.8 mm	790-236-01	10 pieces
33	- 6°	+ 3°	0.7 mm		2.8 mm	790-237-01	10 pieces

CE 0483

* The Dentaaurum version of this prescription is not claimed to be a duplication of any other, nor does Dentaaurum imply that it is endorsed in any way by Drs. McLaughlin, Bennett and Trevisi.



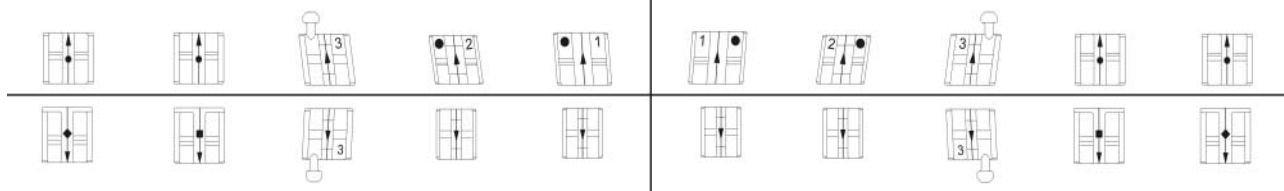
equilibrium® ti Roth 18 + 22 Assortments

equilibrium® ti Bracket-System Roth 18

Slot: 0.46 x 0.76 mm / 18 x 30 · cuspid brackets with button hooks

Torque	- 7°	- 7°	- 2°	+ 8°	+ 12°	+ 12°	+ 8°	- 2°	- 7°	- 7°
Angulation	0°	0°	+ 13°	+ 9°	+ 5°	+ 5°	+ 9°	+ 13°	0°	0°
In/Out	0.7 mm	0.7 mm	0.7 mm	1.3 mm	0.7 mm	0.7 mm	1.3 mm	0.7 mm	0.7 mm	0.7 mm
Width	2.9 mm	2.9 mm	2.9 mm	3.0 mm	3.4 mm	3.4 mm	3.0 mm	2.9 mm	2.9 mm	2.9 mm
Order-No.	780-007-00	780-007-00	780-005-00	780-003-00	780-001-00	780-002-00	780-004-00	780-006-00	780-007-00	780-007-00
Quantity	10 pieces	10 pieces	10 pieces	10 pieces	10 pieces	10 pieces	10 pieces	10 pieces	10 pieces	10 pieces

CE 0483



Torque	- 22°	- 17°	- 11°	- 1°	- 1°	- 1°	- 1°	- 11°	- 17°	- 22°
Angulation	+ 0°	+ 0°	+ 7°	0°	0°	0°	0°	+ 7°	+ 0°	+ 0°
In/Out	0.7 mm	0.7 mm	0.7 mm	1.3 mm	1.3 mm	1.3 mm	1.3 mm	0.7 mm	0.7 mm	0.7 mm
Width	2.9 mm	2.9 mm	2.8 mm	2.4 mm	2.4 mm	2.4 mm	2.4 mm	2.8 mm	2.9 mm	2.9 mm
Order-No.	780-012-00	780-011-00	780-009-00	780-008-00	780-008-00	780-008-00	780-008-00	780-010-00	780-011-00	780-012-00
Quantity	10 pieces	10 pieces	10 pieces	10 pieces	10 pieces	10 pieces	10 pieces	10 pieces	10 pieces	10 pieces

Assortments:

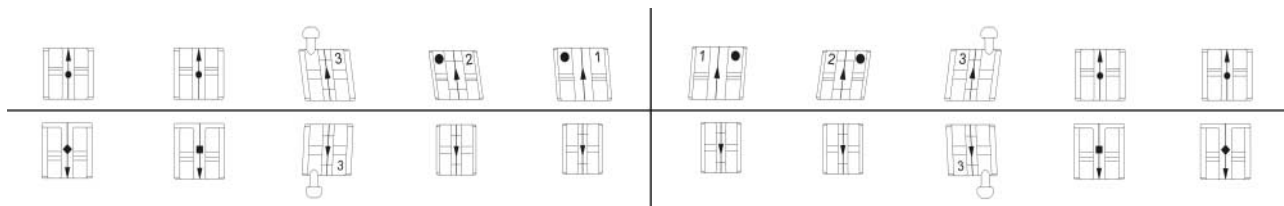
1 case	20 brackets	891-322-00	
1 case	20 brackets + 4 direct bond buccal tubes with vertical hook 2 pcs. each 723-024-00 + 723-026-00	891-323-00	
10 cases	200 brackets	891-345-00	
50 cases	1.000 brackets	891-346-00	

equilibrium® ti Bracket-System Roth 22

Slot: 0.56 x 0.76 mm / 22 x 30 · cuspid brackets with button hooks

Torque	- 7°	- 7°	- 2°	+ 8°	+ 12°	+ 12°	+ 8°	- 2°	- 7°	- 7°
Angulation	0°	0°	+ 13°	+ 9°	+ 5°	+ 5°	+ 9°	+ 13°	0°	0°
In/Out	0.7 mm	0.7 mm	0.7 mm	1.3 mm	0.7 mm	0.7 mm	1.3 mm	0.7 mm	0.7 mm	0.7 mm
Width	2.9 mm	2.9 mm	2.9 mm	3.0 mm	3.4 mm	3.4 mm	3.0 mm	2.9 mm	2.9 mm	2.9 mm
Order-No.	780-019-00	780-019-00	780-017-00	780-015-00	780-013-00	780-014-00	780-016-00	780-018-00	780-019-00	780-019-00
Quantity	10 pieces	10 pieces	10 pieces	10 pieces	10 pieces	10 pieces	10 pieces	10 pieces	10 pieces	10 pieces

CE 0483



Torque	- 22°	- 17°	- 11°	- 1°	- 1°	- 1°	- 1°	- 11°	- 17°	- 22°
Angulation	+ 0°	+ 0°	+ 7°	0°	0°	0°	0°	+ 7°	+ 0°	+ 0°
In/Out	0.7 mm	0.7 mm	0.7 mm	1.3 mm	1.3 mm	1.3 mm	1.3 mm	0.7 mm	0.7 mm	0.7 mm
Width	2.9 mm	2.9 mm	2.8 mm	2.4 mm	2.4 mm	2.4 mm	2.4 mm	2.8 mm	2.9 mm	2.9 mm
Order-No.	780-024-00	780-023-00	780-021-00	780-020-00	780-020-00	780-020-00	780-020-00	780-022-00	780-023-00	780-024-00
Quantity	10 pieces	10 pieces	10 pieces	10 pieces	10 pieces	10 pieces	10 pieces	10 pieces	10 pieces	10 pieces

Assortments:

1 case	20 brackets	891-324-00	
1 case	20 brackets + 4 direct bond buccal tubes with vertical hook 2 pcs. each 723-025-00 + 723-027-00	891-325-00	
10 cases	200 brackets	891-347-00	
50 cases	1.000 brackets	891-348-00	

Ortho-Cast™ 18 · Triple Buccal Tubes for the Banding Technique

Slot: 0.46 x 0.64 mm / 18 x 25 · Face bow tube 1.15 mm / 45 (occlusal) · convertible, for lip bumper / face bow technique

Teeth	Torque	Distal Offset	In/Out	Hook	Width	Order-No.	Quantity	
16	- 10°	15°	0.3 mm	•	4.0 mm	724-010-00	10 pieces	
26	- 10°	15°	0.3 mm	•	4.0 mm	724-011-00	10 pieces	



CE 0483

Ortho-Cast™ 18 · Single rectangular for the Banding Technique

Slot: 0.46 x 0.64 mm / 18 x 25 · non-convertible

Teeth	Torque	Distal Offset	In/Out	Hook	Width	Order-No.	Quantity	
17	- 10°	8°	0.3 mm	•	4.0 mm	724-016-00	10 pieces	
27	- 10°	8°	0.3 mm	•	4.0 mm	724-017-00	10 pieces	



CE 0483

Ortho-Cast™ 18 · Double Rectangular for the Banding Technique

Slot: 0.46 x 0.64 mm / 18 x 25 · convertible

Teeth	Torque	Distal Offset	In/Out	Hook	Width	Order-No.	Quantity	
46	- 25°	12°	0.3 mm	•	4.0 mm	724-012-00	10 pieces	
36	- 25°	12°	0.3 mm	•	4.0 mm	724-013-00	10 pieces	



CE 0483

Ortho-Cast™ 18 · Single Rectangular for the Banding Technique

Slot: 0.46 x 0.64 mm / 18 x 25 · non-convertible

Teeth	Torque	Distal Offset	In/Out	Hook	Width	Order-No.	Quantity	
47	- 30°	12°	0.3 mm	•	4.0 mm	724-014-00	10 pieces	
37	- 30°	12°	0.3 mm	•	4.0 mm	724-015-00	10 pieces	



CE 0483

Ortho-Cast™ 22 · Triple Buccal Tubes for the Banding Technique

Slot: 0.56 x 0.70 mm / 22 x 28 · Face bow tube 1.15 mm / 45 (occlusal) · convertible, for lip bumper / face bow technique

Teeth	Torque	Distal Offset	In/Out	Hook	Width	Order-No.	Quantity	
16	- 10°	15°	0.3 mm	•	4.0 mm	724-110-00	10 pieces	
26	- 10°	15°	0.3 mm	•	4.0 mm	724-111-00	10 pieces	



CE 0483

Ortho-Cast™ 22 · Single Rectangular for the Banding Technique

Slot: 0.56 x 0.70 mm / 22 x 28 · non-convertible

Teeth	Torque	Distal Offset	In/Out	Hook	Width	Order-No.	Quantity	
17	- 10°	8°	0.3 mm	•	4.0 mm	724-116-00	10 pieces	
27	- 10°	8°	0.3 mm	•	4.0 mm	724-117-00	10 pieces	



CE 0483

Ortho-Cast™ 22 · Double Rectangular for the Banding Technique

Slot: 0.56 x 0.70 mm / 22 x 28 · convertible

Teeth	Torque	Distal Offset	In/Out	Hook	Width	Order-No.	Quantity	
46	- 25°	12°	0.3 mm	•	4.0 mm	724-112-00	10 pieces	
36	- 25°	12°	0.3 mm	•	4.0 mm	724-113-00	10 pieces	



CE 0483

Ortho-Cast™ 22 · Single Rectangular for the Banding Technique

Slot: 0.56 x 0.70 mm / 22 x 28 · non convertible

Teeth	Torque	Distal Offset	In/Out	Hook	Width	Order-No.	Quantity	
47	- 30°	12°	0.3 mm	•	4.0 mm	724-114-00	10 pieces	
37	- 30°	12°	0.3 mm	•	4.0 mm	724-115-00	10 pieces	



CE 0483

For all questions concerning the use of our products, please contact our trained personnel in the Orthodontics department.

Hot Line Telephone: +49 7231 / 803-550

Order Department Telephone: +49 7231 / 803-210

You can find additional information referring to our products on the Internet.

www.dentaurum.com

Updated: 10/03

-we reserve the right to make changes-