



*Quadrant, from Cavex, offers a carefully matched range of adhesive materials that provide the appropriate solution for every "quadrant". It includes light- and chemical-cured composites, bonding systems, core build-up material, adhesive cement, a desensitizing primer and a caries indicator. The Q-System is specially developed for the dental practice. For dental use only.*

## Quadrant restorations, the optimal teamwork.

The benefits of composite: aesthetic, durable, tissue-saving, can only be appreciated when the application is going smooth and without any problem. The Q-System has therefore been developed to simplify the application procedure, by using materials that have been perfected for the optimal teamwork of the all components. The Q-System is presented in the following order – Quadrant Total Etch, Quadrant Uni-I-Bond and Quadrant Universal LC.







## What dentists really want.

What is needed in everyday dental practice is a simple, effective technique that is reliable and produces results with minimum risk. Patients expect a smooth treatment that meets their expectations, both clinically and cosmetically.



Etching and application of the bonding should be feasible without any complication. Shade selection of the composite must result in exactly the desired effect.

A syringeable composite is better suited for modelling and ensures good wall adaptation.

An important aspect is the interaction between the materials. There must be an optimum match of etchant, bonding and composite. Finally, the handling procedure for these components and in particular the application time, must be clearly indicated. The dentist wants to be absolutely sure about the final result.



Universal etching gel that you can actually see working.

## Quadrant Total Etch



Quadrant Total Etch contains 20% phosphoric acid. This universal etching gel and its acid concentration are both regarded as state-of-the-art. Research\* has shown that 20% phosphoric acid and an exposure time of 20 seconds produce a hybrid layer of 10  $\mu\text{m}$  thickness. Other combinations of exposure times and acid concentrations cannot improve on that. The presence of gel (residues) is clearly indicated by the distinctive blue colour.

\* S. Uno and W.J. Finger. *Journal of Dentistry*, Vol. 24, No.3, pp. 211-216, 1996.

Convenience and reliability in one bottle.

## Quadrant Uni-Bond

- 1 One-bottle bond, primer and sealer in one. Easy handling: direct from a handy plastic bottle, apply three times with a Q-brush (supplied), then allow to work in for 15 seconds and blow-dry for 2-5 seconds. Finally, cure using a lamp.

The unique adhesive properties of Quadrant Uni-Bond are due to the 4-META monomer, with a hydrophilic group (which bonds to dentin) and a hydrophobic group (which bonds to composite). The deep penetration ensures a good sealing, thus preventing bacterial invasion and the associated secondary caries.

The ethanol-water base increases the rewetting capacity, makes the bonding less critical and ensures a thorough wetting of the dentin and deep penetration of the dentinal tubule. Moreover, this liquid evaporates less rapidly, which means that the composition remains stable and surprises do not occur.





# Syringeable composite for anterior and posterior restorations. Quadrant Universal LC

An excellent solution for both dentist and patient. A universal light-curing composite for the anterior and posterior regions - the perfect balance between aesthetics and durability.

## Durable

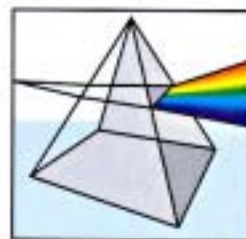
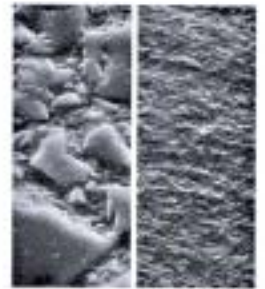
The syringeability makes the material easy to handle and ensures perfect wall adaptation. Easy to model as the material does not stick to instruments. When removing the instrument, the composite stays in place and the bonding layer remains intact.

The tight binding of the silanated fillers to the Bis-GMA matrix prevents filler particles coming loose from the surface. Wear is thus considerably reduced, while the restoration is antagonist friendly in this respect.

For an optimal diagnosis on the X-ray, Quadrant Universal LC is radiopaque.

## Aesthetic

Barium glass imparts unique qualities to Quadrant Universal LC. It is polishable to a high gloss and therefore resistant to tarnishing, discolouration and plaque formation. The refraction indices of matrix and filler have also been carefully matched. The colour of the restoration takes on the colour of the surrounding tooth structure, thus blending naturally with it. This is called the 'chameleon effect'.



Quadrant Universal LC offers the dentist a colour palette with 6 Vita™ shades, an opaque A2 shade for the masking of discolourations and shade I for an attractive effect at incisal edges. Patient and dentist can rely on the shade selection, as the shade guide of Quadrant Universal LC is made of original composite (instead of plastic).



## Integral system, a composite without compromise.

- total etch, state of the art
- one bottle bonding, 4-META monomer
- syringeable composite, perfect wall adaptation
- barium glass, natural light refraction

The standard Quadrant Universal LC starter kit – in syringes or capsules – contains all the materials and tools of the Q-System required to produce all classes of restorations without having to make any compromise. Even with that, the packing takes very little space. The kit is compact and well-organised, thanks to the transparent cover and the preformed tray. Quadrant Total Etch, Quadrant Uni-I-Bond and Quadrant Universal LC are also available as separate refills.



- 1 Q-brushes for applying the bonding. 2 Shade guide, made of original composite.
- 3 Mixing pad. 4 Disposable mixing dishes. 5 Etching tips. 6 Quadrant Uni-I-Bond (also available with Quadrant UniBond) 7 Quadrant Total Etch. 8 Quadrant Universal LC syringe, A2 shade. 9 Quadrant Universal LC syringe, A3 shade. 10 Quadrant Universal LC syringe, A3.5 shade. (Also available in capsules). Not illustrated: instructions for use and laminated cards with application drawings.

Quadrant Universal LC starter kits and separate refills are supplied through your dental supplier. For further information on product range and applications, you can contact Cavex on +31 23 530 77 00 - Dental Customer Service, or logon to [www.cavex.nl](http://www.cavex.nl)